

Trail Blazers/Markers

Purpose

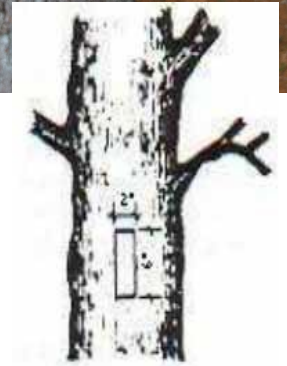
Trail Blazers, also known as confidence or reassurance markers, are a time proven system of denoting the route of a trail.

Installation

Blazers should be placed slightly above eye level. Place them so they can be easily seen from a distance, and are not hidden behind branches or foliage. When standing at one tree marked with a blaze you ought to be able to look down the trail and see the next blaze. Depending upon the terrain, curvature of the trail, and forest density, this distance may be as short as 30 feet away. It does not matter which side of the trail the blaze is placed.



Use offset double blazes to denote the trail is making a sharp turn; the top blaze being slightly offset in the direction of the turn. A well painted blaze will last at least five years, although it is recommended that they be freshen up about every three years.



Specifications

Materials	Material Thickness	Durability (Life Expectancy)	Sign Size (Dimensions)	Recommended Colors	Fonts	Letter Height
Synthetic (Plastic) Materials	0.024 gauge	5 + years	2 in x 6 in	Recommend the use of Nelson brush type boundary mark paint which is available from Nelsonpaint.com in colors white, yellow, red, blue, orange, purple, and green.	N/A	N/A
Aluminum	0.012 gauge	10 + years	2 in x 6 in			
Paint- Bark	Thin coating	2 + years	2 in x 6 in			